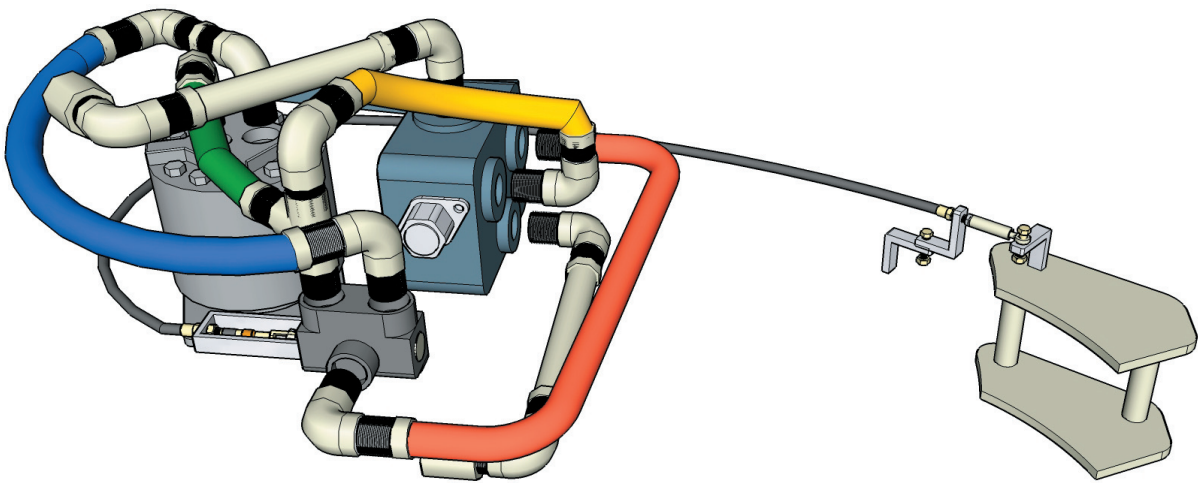


MECHANICAL OVER HYDRAULIC LOCK OUT ASSEMBLY

INSTALLATION INSTRUCTIONS



Manufactured By:

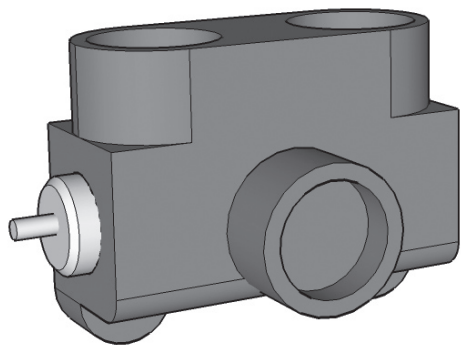
Pentacle Oil Field Supply Inc.

Edmonton, Alberta, Canada Tel: 1.780.902.3485 Fax: 1.780.459.6530

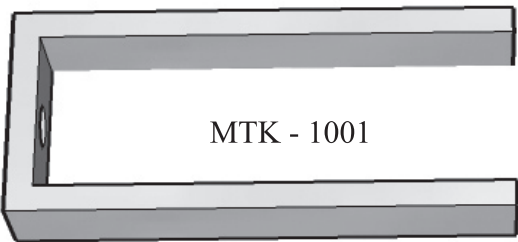
M & T Tong Repair

Leduc, Alberta, Canada Tel: 1.780.980.2409

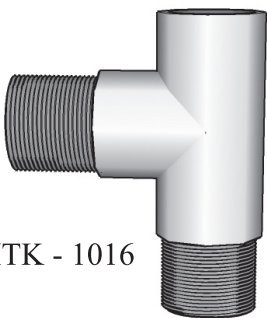
Contents of the Kit



MTK - 1015



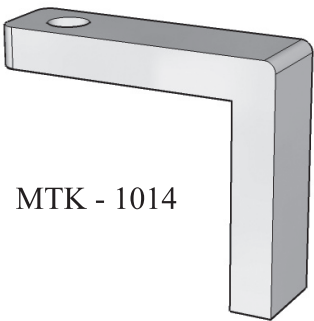
MTK - 1001



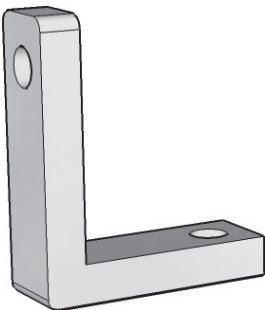
MTK - 1016



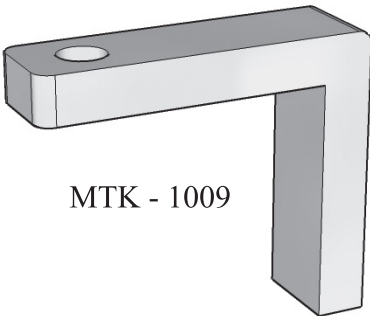
MTK - 1017



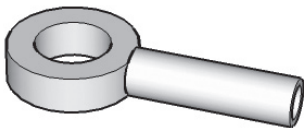
MTK - 1014



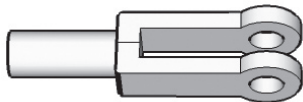
MTK - 1013



MTK - 1009



MTK - 1010



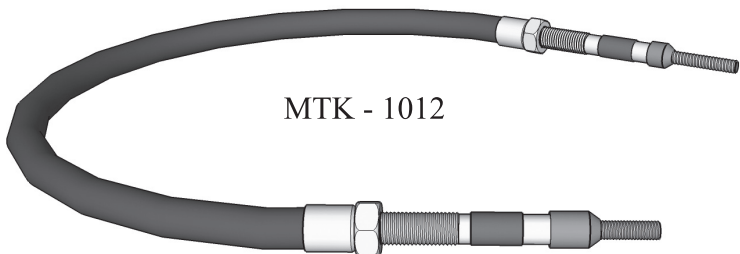
MTK - 1006



MTK - 1005

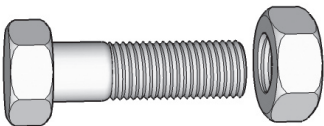


MTK - 1011



MTK - 1012

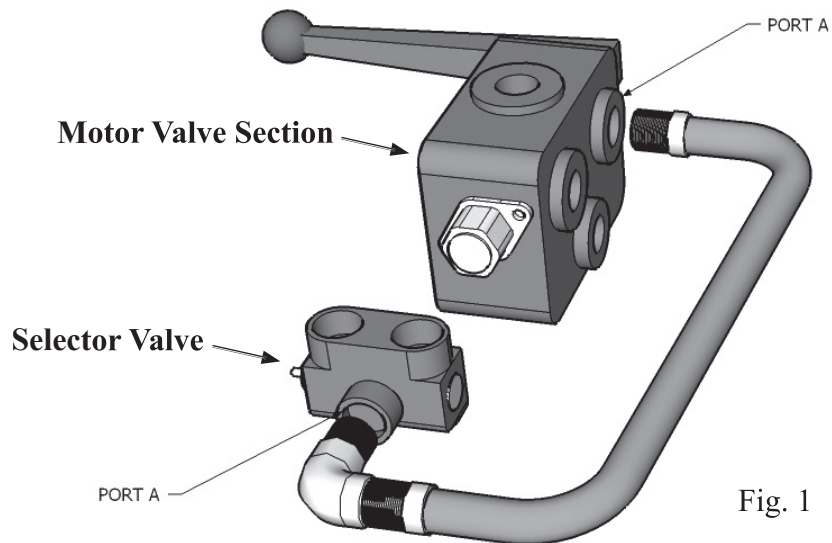
MTK - 1008



MTK - 1007

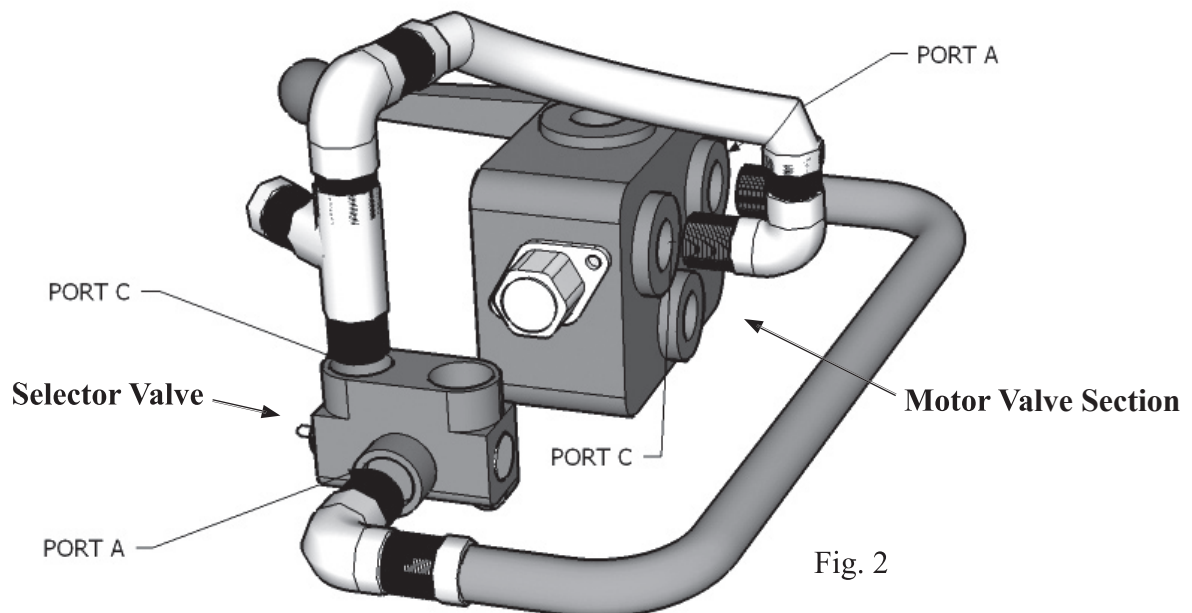
Step 1

Make hose connection from Motor Valve Section Port A (the port closest to the handle) to Selector Valve Port A (Fig. 1). When connecting to the Selector Valve port use one of the provided



Step 2

Make hose connection from Motor Valve Section Port C to Selector Valve Port C (Fig. 2). When connecting to the Selector Valve Port use the T-fitting provided.



Step 3

Make hose connection from Motor Port C to Selector Valve Port C (Fig. 3). The connection to the Selector Valve Port should be done through the T-fitting installed in the previous step.

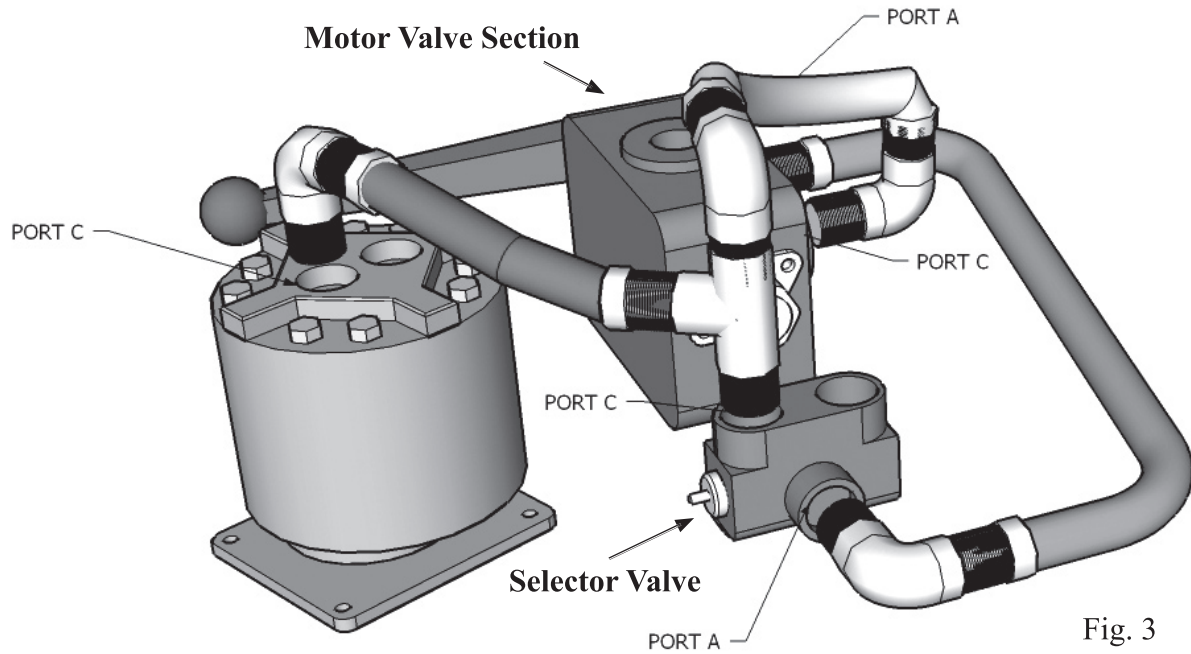


Fig. 3

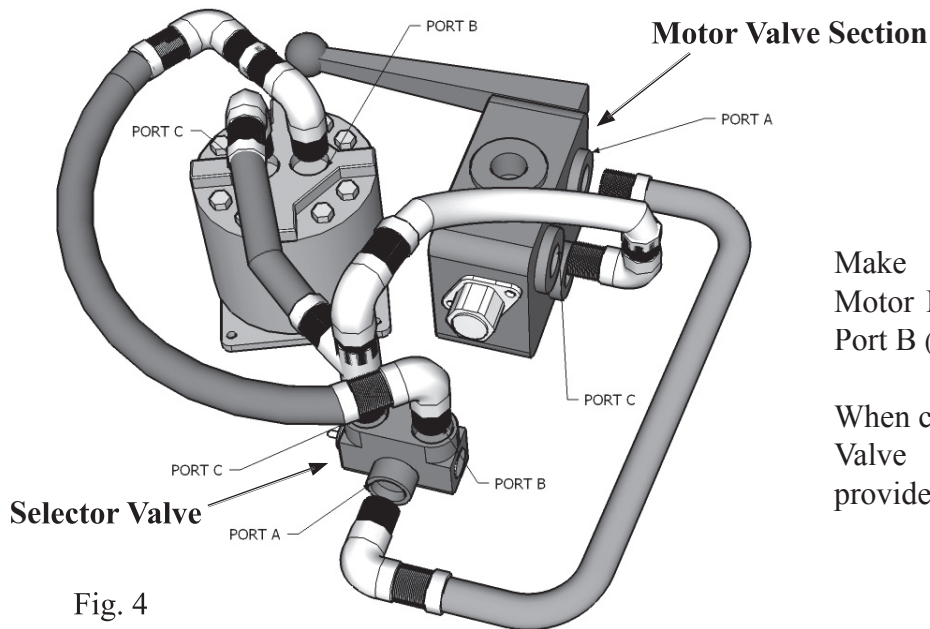


Fig. 4

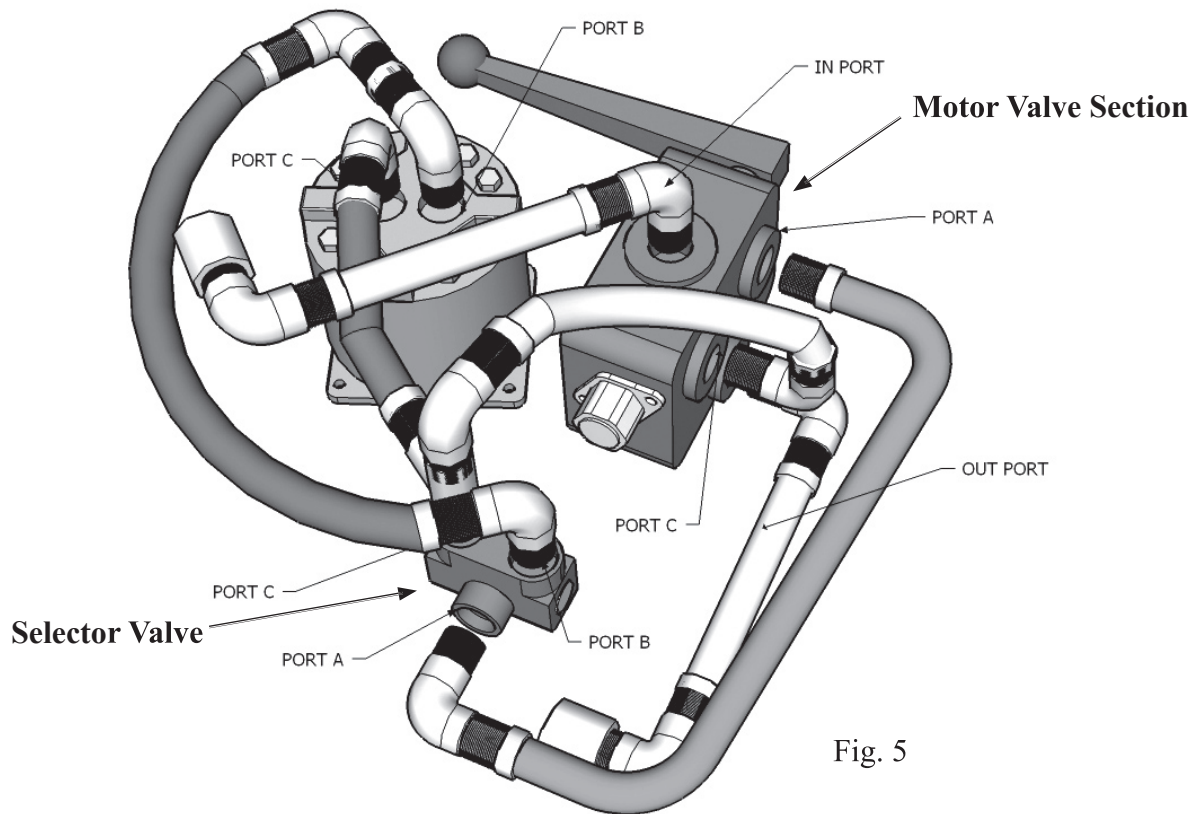
Step 4

Make hose connection from Motor Port B to Selector Valve Port B (Fig. 4).

When connecting to the Selector Valve Port use one of the provided elbow fittings.

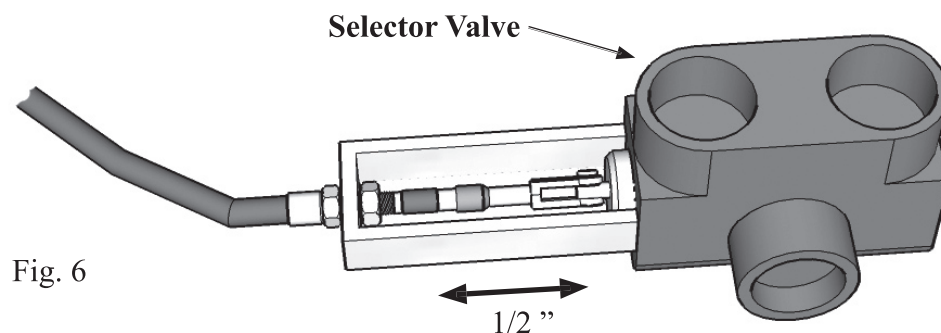
Step 5

Install the input pipe to the top port of the Motor Valve Section (Fig. 5). The output/dump pipe should be connected to the bottom port on the Motor Valve Section.



Step 6

Attach lock out cable to mounting bracket and attach clevis to Selector Valve's shut-off pin (Fig. 6).



Step 7

Position cable to side bracket in appropriate location on side of tong (Fig. 7). This should not be welded until door bracket is properly located. Side and door brackets may require trimming to accommodate height to be mounted on the tong.

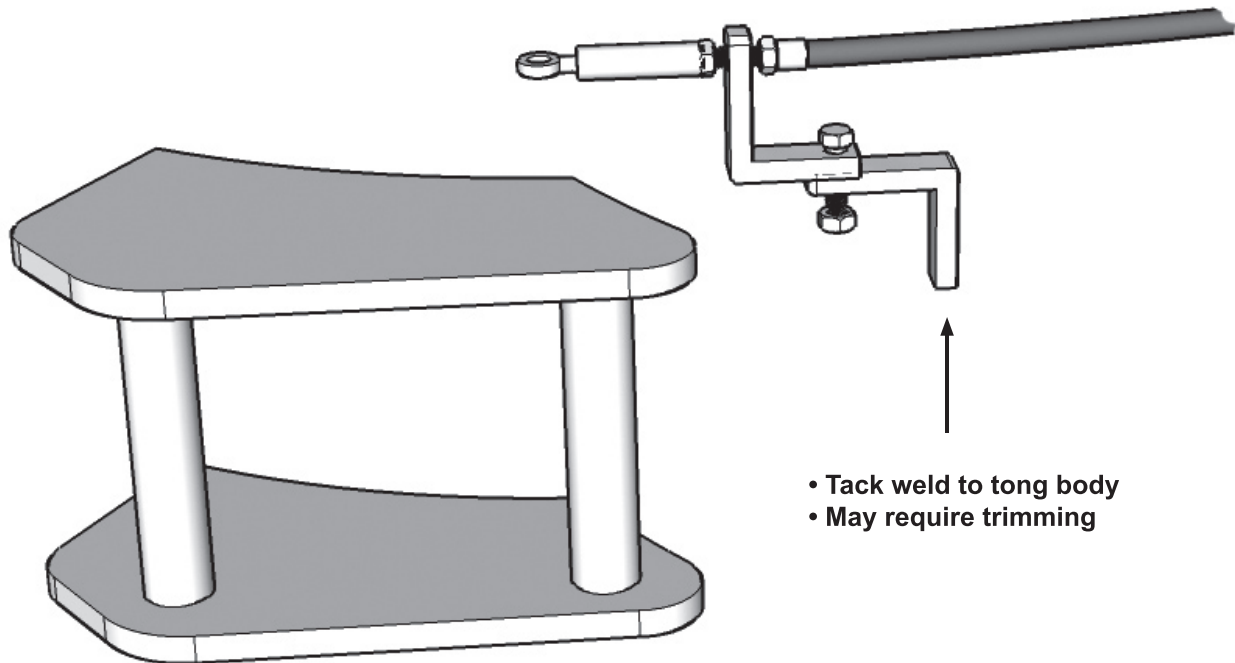


Fig. 7

Step 8

Position door cable bracket on door assembly as per Fig. 8. Selector Valve requires 1/2" of cable travel. Tack weld door mount clamp bracket to door assembly and test movement of cable assembly by opening and closing of door assembly. The cable assembly should activate the selector valve freely.

When the door assembly is in the open position the selector valve shut-off pin should travel to the off position.

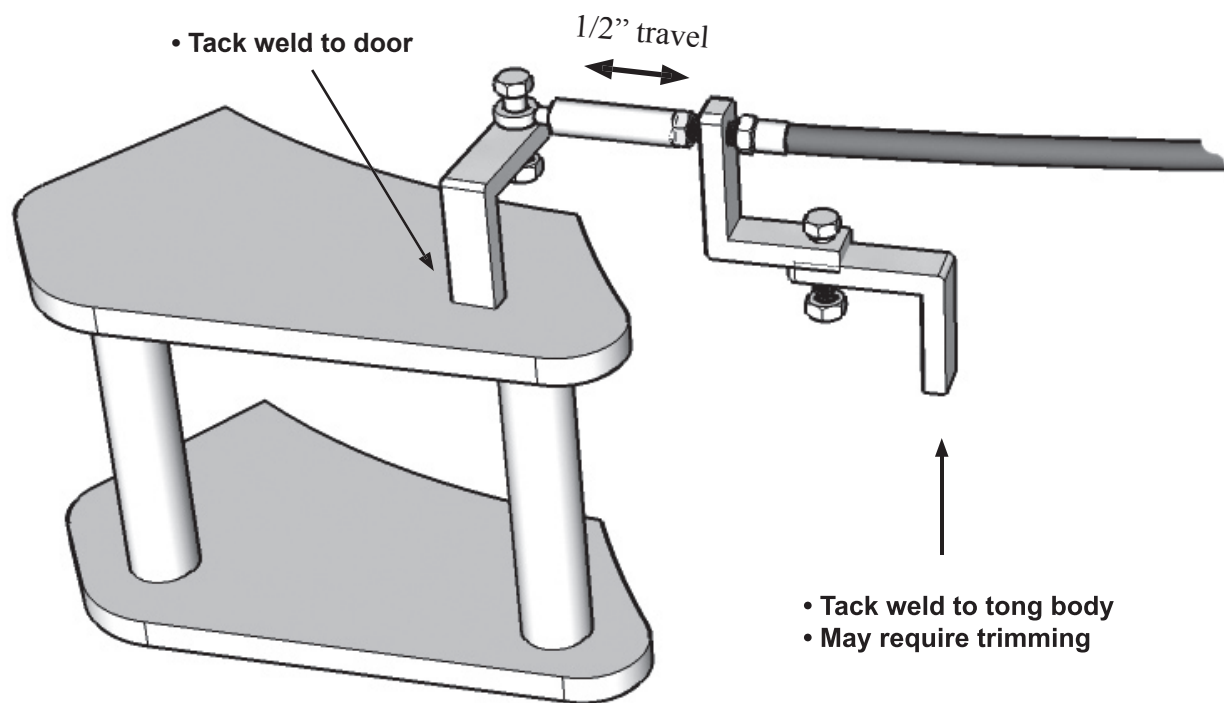


Fig. 8

Step 9

When step 8 is accomplished, secure the side mounting bracket by welding. The door mounting bracket should be welded at this time. As well fully weld cable mounting bracket and pedestal bracket to tong plate.

NOTE:

- **TACK WELD DOOR MOUNTING BRACKET AND SIDE BRACKET.**
- **TEST OPERATION BEFORE FULL FINAL WELDING TO TONG.**
- **WHEN DOOR IS OPENED SELECTOR VALVE WILL DUMP ALL HYDRAULIC FLUID TO MOTOR.**

See the back of this manual for a full detailed picture of this kit assembly.

